

# 川貴餐飲設備行

Chuan-Kuei Food Equipment Co.

蒸箱 · 保溫箱及展示櫃 · 發酵箱 · 發酵室 · 不銹鋼製品

Steamer · Warmer/Showcase · Proofer/fermentation cabinet · Fermentation room

Professional manufacturer and exporter of diversified stainless steel food machine



202501ver.



榮獲中華民國台灣新型專利  
第M437930號 · 第M465119號  
第M481687號 · 第M496102號



# CONTENTS

**01**

產品應用範圍、產品特性  
*Range of application, Feature*

**02**

營業項目  
*Scope of business*

**03**

舒肥機  
*Sous vide machine*

**04-10**

蒸箱  
*Steamer*

**11**

蒸台  
*Dumpling steamer*

**12-13**

保溫箱及展示櫃  
*Warmer & Showcase*

**14-15**

發酵箱  
*Proofer / fermentation cabinet*

**16-17**

不銹鋼周邊配件  
*Stainless steel accessories*

**03**

電熱型商用舒肥機  
*Commercial electric sous vide machine*

**04-05**

鍋爐應用型蒸箱  
*Boiler applied type of steamer*

**06-07**

洩壓瓦斯型/電熱型蒸箱  
*Release air pressure gas/electric type of steamer*

**08**

經濟三面保溫瓦斯型/電熱型蒸箱  
*Economical 3-sided stainless steel gas/electric type of steamer*

**9-10**

小型瓦斯型/電熱型蒸箱  
*Small-sized gas/electric type of steamer*

**11**

瓦斯型/電熱型蒸台  
*Commercial gas/electric dumpling steamer*

**12-13**

瓦斯型/電熱型保溫箱(展示櫃)  
*Gas/electric type of warmer (showcase)*

**14-15**

發酵箱  
*Proofer/fermentation cabinet*

**16-17**

蒸盤 / 台車、子母推車、存放架  
*Steam tray, rack trolley and storage trolley*





## 產品應用範圍 Range of application

包子、饅頭、餃類、壽桃、麵龜、麻糬、刈包、客家菜包、艾草包、叉燒包、奶皇包、流沙包、港式點心、燒賣、佛跳牆、粿類、鹹粿、芋粿、年糕、米糕、發糕、碗粿、紅龜粿、黑糖糕、蘿蔔糕、粽子、便當、米類、油飯、紅麵線、地瓜、芋頭、南瓜、蒸蛋糕、蛋、茶碗蒸、布丁、素食品、火腿料、火鍋、肉圓、肉丸、魚類、魚卷、肉類、海鮮、豆類、豆餡、豆腐、穀物、大蒜、玉米、蔬菜、年菜、調理包、罐頭、雞精、燉湯、盅湯、中藥業、製酒業、塑膠業、肥料、工業用產品、化妝品業、布匹紡織業、高溫殺菌、發酵、舒肥等…。

■ Our products are widely steam a variety of products , such as:

Bao, steamed bun, dumpling, peach bun, mochi, gua bao, Hakka buns, artemisia argyi buns, custard bun, Hong Kong style dim sum, shumai, buddha's delight, rice cake, taro rice cake, sticky rice cake, tube rice pudding, steamed sponge cake, savory rice pudding, turtle-shaped rice cake, brown sugar cake, turnip cake, chinese rice dumpling(zongzi), boxed meal(bento), rice, Taiwanese sticky rice, vermicelli, sweet potato, taro, pumpkin, steamed cake, eggs, Chawanmushi, pudding, vegetarian foods, ham, ingredients of hot pot, Taiwanese meatballs, meatballs, fish, fish roll, meat, seafood, beans, tofu(bean curd), cereals, garlic, New Year's dishes, ready-cooked product, can, chicken essence, stew, soup, chinese herbal medicine, wine industry, plastic industry, fertilizer, industrial products, cosmetic material, cloth industry, high temperature sterilization, fermentation, sous vide etc.



## 產品特性 Feature

- ☑ 能源消耗較傳統型蒸籠節省，蒸煮時間大幅縮短、高溫時熱度分布均勻零死角。

Saves energy consumption compared to traditional steamers, the cooking time is greatly shortened, heat well-distributed and no dead angle at high temperature.



- ☑ 機體採用食品級SUS304不銹鋼板製作成型。

保溫效果佳、使用壽命長、清潔保養方便。

The body of machines is made of SUS304, which has good thermal insulation effect, long service life and convenient cleaning and maintenance.



- ☑ 設有自動進水功能，毋須擔心補水問題，省事有效率。

Equipped with automatic water supply function, there is no need to worry about making up water and getting things done more efficiently.



- ☑ 電子控制面板輕鬆操作、簡易上手。

多數機款可以定溫、定時並有蜂鳴器提醒。

Easy to operation the electric control panel. The fixed time and temperature can be preset, and the buzzer is going to alarm.





〔諮詢 | 研發設計 | 生產 | 銷售 | 安裝 | 售後維修保固 | 多元合作鏈之整廠生產線規劃〕

■專業多元化不銹鋼食品機械&餐飲設備之研發設計、生產、銷售、外銷。

- 蒸箱/蒸爐/蒸櫃
- 高溫殺菌櫃
- 保溫箱及展示櫃
- 發酵箱
- 發酵室
- 小籠包蒸台
- 商用舒肥機
- 中式食品相關機械設備
- 其他機械設備

■不銹鋼食品機械&餐飲設備客製化服務。

■各式食品機械&餐飲設備之周邊配件。

- 台車
- 子母推車
- 存放架
- 不銹鋼蒸盤
- 不銹鋼條網蒸盤
- 不銹鋼條網蒸盤加框
- 不銹鋼沖孔盤
- 不銹鋼密式蒸盤
- 不銹鋼導水板
- 不銹鋼工作桌
- 其他周邊配件

■相關產業之食品機械與多元合作鏈之整廠生產線之諮詢、規劃、輸出、整合。

- 餐飲業
- 麵包烘焙坊
- 中央廚房
- 食品加工廠
- 生技產業
- 學校
- 機關團體
- 其他相關產業

■產品之諮詢、售後維修保固服務。

**Consultation | Research & design | Production | Sales | Installation | After-sales service**  
**Multiple cooperation chains for the entire production line machines.**

■Specializing in the research, design, production, sales, and export of diversified stainless steel food equipment:

- Food steamer machine
- High temperature sterilization steamer
- Warmer & Showcase
- Proofer (fermentation cabinet)
- Fermentation room
- Commercial dumpling steamer
- Commercial sous vide machine
- Other chinese food machines
- Other machines & equipment

■Customized services for stainless steel food machines and equipment.

■Design, production and sales of various related accessories for food machines and equipment:

- Floor type of rack trolley
- Rack trolley
- Bakery tray rack trolley
- Storage trolley
- Stainless steel steam tray
- Stainless steel net tray
- Stainless steel net tray (heightening frame)
- Stainless steel punched tray
- Stainless steel holeless steam tray
- Stainless steel drainage board (inverted V shape)
- Stainless steel work table
- Other accessories

■Consultation, planning, manufacture and integration for food machines and equipment and the multiple cooperation chains for the entire production line machines:

- Food & beverage industry
- Bakery
- Central kitchen
- Food processing industry
- Biotechnology industry
- School
- Organization
- Other related industries

■Consultation and after-sales service, warranty and repair service for machines and equipment.



# 電熱型商用舒肥機 CKE-SV Commercial electric sous vide machine

電熱型商用舒肥機

CKE-SV Electric sous vide machine



商用舒肥機主機與電控箱採用分開放置，減少受潮疑慮。

*Sous vide machine's main unit and electric control box are separated to minimize the risk of moisture damage.*

配有計時器可供定時及溫度控制器使其保持水溫長時間穩定。

*It is equipped with a timer for scheduled control and a temperature controller to maintain a constant water temperature for an extended period.*



一次大約可放150包 (@100g) 的雞肉。
   
*Can hold approximately 150 packs of chicken (100g each) at a time.*

系列-型號 Model no.	規格 Specification	機台尺寸 (寬×深×高) Dimensions(W×D×H)	使用電力 Voltage
CKE-SV	主機外部尺寸： Main machine outer	1180×700×1050 mm	220V,1Ø,5kW,25A
	內部可用尺寸： Available internal	1000×600×500 mm	
	外掛之溫度控制箱尺寸： Temperature control box	300×155×495 mm	



## 鍋爐應用型蒸箱 CK-615B1,CK-615B2

Boiler applied type of steamer

“

本款蒸箱須搭配鍋爐使用

*This steamer must be used with a boiler* ”

示意圖 Photos for reference

規格[單門,雙車式]可容納2台[15格台車]

- 川貴門側的**專利迫緊把手**能有效地卡固於梯形塑鋼墊的卡槽，可迅速、方便開啟及緊閉蒸箱門，也可DIY調整至最佳的密合度。

*The patented tight handle on the side of the door can be effectively fixed to the groove of the fastening pad. It can quickly and easily open and close the door of steamer, and you can also DIY adjust the tight handle to the best airtightness.*

單門,雙車式

**CK-615B2 Single door, Two rack trolleys.**



系列-型號 Model no.	規格 Specification	機台尺寸(寬×深×高) Dimensions (W×D×H)	每小時需提供蒸氣進氣量 Needs a steam inflow rate per hour
CK-615B1	單門, 單車式 Single door, Single rack trolley.	1245×1050×2010 mm	80~100 kg
CK-615B2	單門, 雙車式 Single door, Two rack trolleys.	1245×1740×2030 mm	100~120 kg



示意圖 [15格台車] 推入鍋爐應用型蒸箱 Photos for reference



單門,單車式  
CK-615B1 Single door, Single rack trolley.

- 溫度方面可設置**定溫**或**持續加溫**。  
*In terms of temperature, you can preset fixed temperature or keep heating up.*
- 門側的**劍型後鈕**可DIY調整至最佳的密合度。  
*The sword-shaped adjustable hinge on the side of the door can be DIY adjusted to the best air tightness.*
- 蒸氣入氣採用**三段式**功能，分別有自動控制-定溫、自動控制-持續加溫、手動控制，可依照**產品屬性**的不同，**切換**不同的功能。  
*There are three-segments functions for entering steam ----- (1)auto control-fixed temperature, (2)auto control-keep heating,(3)manual control Depending on the product attributes of the steamed, different functions can be switched.*



15格台車  
15-layer floor type rack trolley

蒸盤尺寸 Size of tray	蒸盤數量 Q'ty of tray	使用電力 Voltage
605×605 mm	15 pcs	110V,1Ø
	30 pcs	220V,1Ø





## 洩壓瓦斯型蒸箱 | CK-605G1

Release air pressure gas

type of steamer

適用於桶裝瓦斯、天然瓦斯。  
*Suitable for LPG and LNG.*

當水位異常(即**水位不足或過高**)時，蜂鳴器會發出間接地警示聲響。  
*When the water level is abnormal(means the water level is insufficient or too high), the buzzer is going to intermittent beep warning.*

瓦斯型  
CK-605G1 Gas type

12格子母推車(605)  
12-layer rack trolley



系列-型號 Model no.	類型 Type	機台尺寸(寬×深×高) Dimensions(W×D×H)	蒸盤尺寸 Size of tray	蒸盤數量 Q'ty of tray	使用電力 Voltage
CK-605G1	瓦斯型 Gas	1115×1000×2060 mm	605×605 mm	12 pcs	110V,1Ø 220V,1Ø



## 洩壓電熱型蒸箱 CK-605E1

Release air pressure electric type of steamer

- 溫度方面可設置**定溫**或**持續加溫**。  
In terms of temperature, you can preset fixed temperature or keep heating up.
- 設有**水位異常**(即**水位不足或過高**)時會**自動斷電**之安全裝置，同時蜂鳴器也會發出間接地警示聲響。  
Equipped with a safety device that will automatically cut off power when the water level is abnormal(means the water level is insufficient or too high), and the buzzer is going to intermittent beep warning at the same time.
- 洩壓款蒸箱(瓦斯型、電熱型)門側的**劍型後鈕**可DIY調整至最佳的密合度。  
The sword-shaped adjustable hinge on the side of the door can be DIY adjusted to the best air tightness.

電熱型

CK-605E1 Electric type



示意圖 Photo for reference  
[12格子母推車]推入蒸箱



系列-型號 Model no.	類型 Type	機台尺寸(寬×深×高) Dimensions(W×D×H)	蒸盤尺寸 Size of tray	蒸盤數量 Q'ty of tray	使用電力 Voltage
CK-605E1	電熱型 Electric	1115×1000×2060 mm	605×605 mm	12 pcs	220V,3Ø,18kW,48A 380V,3Ø,18kW,28A 415V,3Ø,18kW,26A



## 經濟三面保溫瓦斯型/電熱型蒸箱 CK-485G-12, CK-485E-12

### Economical 3-sided stainless steel gas/electric type of steamer

12格子母推車(485)  
12-layer rack trolley



瓦斯型  
CK-485G-12 Gas type

- 適用於桶裝瓦斯、天然瓦斯。  
*Suitable for LPG and LNG.*
- 當水位異常(此款即**水位不足**)時，蜂鳴器會發出間接地警示聲響。  
*When the water level is abnormal (means the water level is insufficient), the buzzer is going to intermittent beep warning.*

電熱型  
CK-485E-12 Electric type

【以下為電熱型特點】：  
*The following are the features of electric type:*

- 溫度方面可設置**定溫**或**持續加溫**。  
*In terms of temperature, you can preset fixed temperature or keep heating up.*
- 設有**水位異常**(即**水位不足或過高**)時會**自動斷電**之安全裝置，同時蜂鳴器也會發出間接地警示聲響。  
*Equipped with a safety device that will automatically cut off power when the water level is abnormal(means the water level is insufficient or too high), and the buzzer is going to intermittent beep warning at the same time.*



系列-型號 Model no.	類型 Type	機台尺寸(寬×深×高) Dimensions(W×D×H)	蒸盤尺寸 Size of tray	蒸盤數量 Q'ty of tray	使用電力 Voltage
CK-485G-12	瓦斯型 Gas	952×820×2030 mm	485×485 mm	12 pcs	110V,1Ø 220V,1Ø
CK-485E-12	電熱型 Electric				220V,3Ø,18kW,48A 380V,3Ø,18kW,28A 415V,3Ø,18kW,26A



## ■ 小型瓦斯型蒸箱 ■ CK-465G-7, CK-465G-10

Small-sized gas type of steamer



瓦斯型(7格)  
CK-465G-7 Gas type (7-layer)



瓦斯型(10格)  
CK-465G-10 Gas type (10-layer)

■ 適用於桶裝瓦斯、天然瓦斯。  
Suitable for LPG and LNG.

系列-型號 Model no.	類型 Type	規格 Specification	機台尺寸(寬×深×高) Dimensions(W×D×H)	蒸盤尺寸 Size of tray	使用電力 Voltage
CK-465G	瓦斯型 Gas	6格 (6-layer)	750×755×1508 mm	465×465 mm	無控制箱 None
		7格 (7-layer)			
		8格 (8-layer)			
		10格 (10-layer)	750×755×1695 mm		



## 小型電熱型蒸箱 CK-465E

Small-sized electric type of steamer

可額外購買[14格存放架]搭配使用

- 溫度方面可設置**定溫**或**持續加溫**。

*In terms of temperature, you can preset fixed temperature or keep heating up.*

- 設有**水位異常**(即**水位不足或過高**)時會**自動斷電**之安全裝置，同時蜂鳴器也會發出間接警示聲響。

*Equipped with a safety device that will automatically cut off power when the water level is abnormal(means the water level is insufficient or too high), and the buzzer is going to intermittent beep warning at the same time.*

電熱型(7格)

CK-465E Electric type (7-layer)



電熱型(10格)

CK-465E Electric type (10-layer)



系列-型號 Model no.	類型 Type	規格 Specification	機台尺寸(寬×深×高) Dimensions(W×D×H)	蒸盤尺寸 Size of tray	使用電力 Voltage
CK-465E	電熱型 Electric	6格 (6-layer)	750×705×1508 mm	465×465 mm	220V,3Ø,12kW,32A 380V,3Ø,12kW,19A 415V,3Ø,12kW,17A
		7格 (7-layer)			
		8格 (8-layer)			
		10格 (10-layer)			



# 瓦斯型/電熱型蒸台 | CKE-500G, CKE-500E

Commercial gas/electric dumpling steamer

可額外客製化購買[工作台]搭配使用

- 適用於桶裝瓦斯、天然瓦斯。  
Suitable for LPG and LNG.

- 機體清潔保養方便，設有自動進水功能，加熱快速且操作簡易。  
The body of the machine is easy to clean and maintain, equipped with an automatic water inlet function, heats up quickly and operates easily.

瓦斯型蒸台-4孔  
CKE-500G-4 Gas, 4-hole.



電熱型蒸台-2孔  
CKE-500E-2 Electric, 2-hole.



電熱型蒸台-6孔  
CKE-500E-6 Electric, 6-hole.



系列-型號 Model no.	規格 Specification		機台尺寸(寬×深×高) Dimensions(W×D×H)	使用電力 Voltage
CKE-500E-2	電熱式 Electric	2孔 2-hole	673×660×760 mm	220V,1Ø,4kW,20A 380V,1Ø,4kW,13A
CKE-500E-4		4孔 4-hole	853×740×760 mm	220V,3Ø,12kW,34A 380V,3Ø,12kW,21A
CKE-500E-6		6孔 6-hole	1040×740×760 mm	220V,3Ø,18kW,50A 380V,3Ø,18kW,30A
CKE-500G-2	瓦斯型 Gas	2孔 2-hole	673×705×760 mm	
CKE-500G-4		4孔 4-hole	853×860×760 mm	
CKE-500G-6		6孔 6-hole	1040×860×760 mm	



## ■ 瓦斯型保溫箱 (展示櫃) ■ CKD-465GD, CKD-605GD

Gas type of commercial warmer (showcase)

瓦斯型(12抽)

CKD-605GD-12 Gas type (12-drawer)

■ 適用於桶裝瓦斯、天然瓦斯。

Suitable for LPG and LNG.

■ 瓦斯型保溫箱 (展示櫃) 無配置電子控制面板。機內溫度可視保溫箱 (展示櫃) 抽屜上方的**圓形溫度表**。

This model doesn't have an electronic control panel. The internal temperature of the warmer (showcase) can be view on the round shape thermometer above the the door of warmer (showcase).

■ 抽屜**滑順好拉**，每層皆有**擋軌設計**，毋須擔心物品掉落。

The drawers are easy to pull, and each drawer has a stop rail design, so you don't have to worry about falling items.

■ 設有**自動進水功能**，毋須擔心補水問題、省事有效率。

Equipped with automatic water supply function, so you don't have to worry about making up water and getting things done more efficiently.

■ 底部四個輪子皆採用**活剎輪**，方便移動、好定位。

The four casters at the bottom are 4 inch PR lockable casters for easy movement and positioning.



系列-型號 Model no.	類型 Type	規格 Specification	機台尺寸 (寬×深×高) Dimensions(W×D×H)	機內每層間距 Spacing/per layer	蒸盤尺寸 Size of tray
CKD-465GD-6	瓦斯型 Gas	6抽 (6-drawer)	777×675×1430 mm	120 mm	465×465 mm
CKD-465GD-12		12抽 (12-drawer)	1324×675×1430 mm		
CKD-605GD-6		6抽 (6-drawer)	917×815×1430 mm		605×605 mm
CKD-605GD-12		12抽 (12-drawer)	1603×815×1430 mm		



## 電熱型保溫箱 (展示櫃) | CKD-465ED, CKD-605ED

Electric type of commercial warmer (showcase)

電熱型(12抽)

CKD-465ED-12 Electric type (12-drawer)



電熱型(6抽)

CKD-465ED-6 Electric type (6-drawer)



- 溫度方面可設置**定溫**或**持續加溫**。

In terms of temperature, you can preset fixed temperature or keep heating up.

- 設有水位異常 (即**水位不足**或**過高**) 時會**自動斷電**之安全裝置，同時蜂鳴器也會發出間接地警示聲響。

Equipped with a safety device that will automatically cut off power when the water level is abnormal (means the water level is insufficient or too high), and the buzzer is going to intermittent beep warning at the same time.

系列-型號 Model no.	類型 Type	規格 Specification	機台尺寸 (寬×深×高) Dimensions(W×D×H)	蒸盤尺寸 Size of tray	使用電力 Voltage
CKD-465ED-6	電熱型 Electric	6抽 (6-drawer)	777×630×1430 mm	465×465 mm	220V,3Ø,8kW,21A
CKD-465ED-12		12抽 (12-drawer)	1324×630×1430 mm		220V,3Ø,12kW,32A
CKD-605ED-6		6抽 (6-drawer)	917×770×1430 mm	605×605 mm	220V,3Ø,8kW,21A
CKD-605ED-12		12抽 (12-drawer)	1603×770×1430 mm		220V,3Ø,12kW,32A



## 發酵箱 | CKE-601E1, CKE-602E1, CKE-602E2

Proofer / fermentation cabinet

須額外購買[台車、子母推車、不銹鋼蒸盤]搭配使用

單門, 子母式

CKE-601E1 Single door, Trolley type



雙門, 子母式

CKE-602E1 Twin doors, Trolley type



■ 溫度、濕度可**分開控制**。

Temperature and humidity can be controlled separately.

■ 機內裝置**風扇**，可使發酵箱內部的**熱氣進行循環**動作。

There are fans in the machine to make the hot air inside the proofer / fermentation cabinet circulate.

■ 設有透視強化玻璃、日光燈照明，能清楚地**查視發酵狀況**。

It is equipped with transparent tempered glass and fluorescent lighting, allowing clear observation of the fermentation process.

系列-型號 Model no.	規格 Specification	機台尺寸 (寬×深×高) Dimensions(W×D×H)	合用的蒸盤尺寸 Suitable size of tray	使用電力 Voltage
CKE-601E1	單門, 子母式 Single door, Trolley type	1055×840×2020 mm	605×605 mm	220V,1Ø,3.5kW,16A
CKE-601E2	單門, 落地式 Single door, Floor type	1230×1020×2075 mm		220V,1Ø,5kW,24A
CKE-602E1	雙門, 子母式 Twin doors, Trolley type	1807×840×2020 mm		220V,1Ø,6.5kW,23A
CKE-602E2	雙門, 落地式 Twin doors, Floor type	1950×1027×2110 mm		220V,1Ø,6.5kW,30A



雙門,落地式  
CKE-602E2 Twin doors, Floor type



示意圖 Photo for reference  
[雙門,落地式發酵箱]開門



示意圖 Photo for reference  
[12格子母推車]推入子母式發酵箱



示意圖 Photo for reference  
[雙門,落地式發酵箱]後方進水、排水



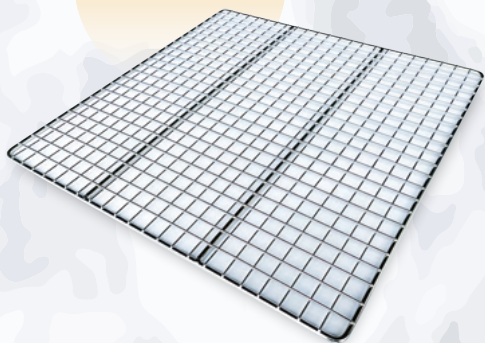
→ You need to additionally buy [15-layer floor type rack trolley], [12-layer rack trolley] and [stainless steel steam tray] for use with the proofer "CKE-601E1", "CKE-602E1" and "CKE-602E2".



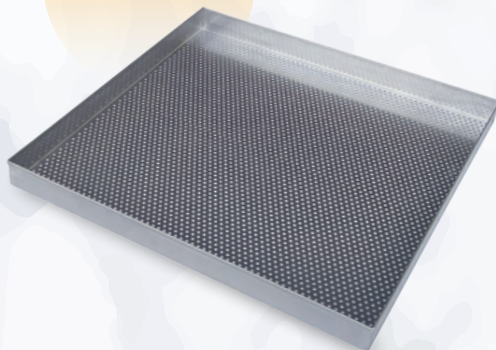
## 不銹鋼周邊配件：蒸盤

Stainless steel accessories: steam tray

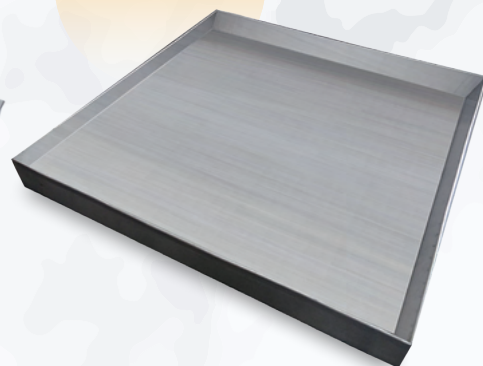
不銹鋼條網蒸盤  
S/S net tray



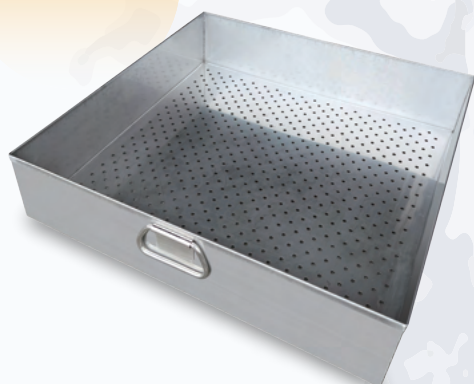
不銹鋼沖孔蒸盤  
S/S punched tray



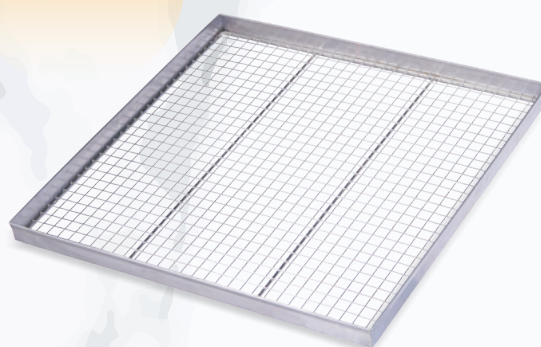
不銹鋼密式蒸盤  
S/S holeless tray



不銹鋼沖孔蒸盤加把手  
S/S punched tray with handles



不銹鋼條網蒸盤加框  
S/S net tray (heightening frame)



不銹鋼導水板  
S/S drainage board (Inverted V shape)



14格存放架(465)  
14-layer storage trolley



將您的產品層層排列・可輕鬆移動・省時、省力、分層有序又有效率！

Arrange your products in layers for easy mobility, saving time and effort while keeping everything organized and efficient!



## 不銹鋼周邊配件：台車、子母推車、存放架

Stainless steel accessories: rack trolley, storage trolley

15格台車

15-layer floor type rack trolley

放置沖孔盤



12格子母推車-加強型(605)

12-layer rack trolley

放置沖孔盤



品名及規格 Item name & specification	包外尺寸 (寬×深×高) Dimensions(W×D×H)	合用的蒸盤尺寸 Suitable size of tray	每層間距 Spacing/per layer
15格台車 15-layer floor type rack trolley	674×634×1702 mm	605×605 mm	96.5 mm
12格子母推車 (605) 12-layer rack trolley(for 605)	710×760×1725 mm		91 mm
12格子母推車 (485) 12-layer rack trolley(for 485)	590×664×1725 mm	485×485 mm	91 mm
10格子母推車 10-layer rack trolley	590×664×1595 mm		96.5 mm
14格存放架 14-layer storage trolley	510×480×1593 mm	465×465 mm	98.5 mm



# 川貴餐飲設備行

Chuan-Kuei Food Equipment Co.



## 穎川食品機械有限公司

Ying-Chuan Food Machinery Co., Ltd



(+886)-4-2532-1486



(+886)-4-2532-1491



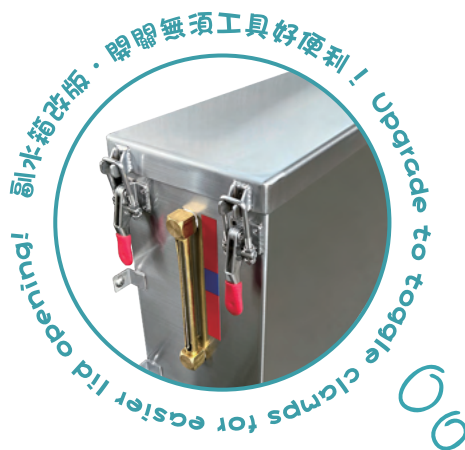
kuei.a888@msa.hinet.net



<https://www.chuankuei-steamer.com>



台中市大雅區西寶里西村路10-32號  
No.10-32, Xi-Chun Road, Xi-Bao village,  
Da-Ya District, Taichung City, Taiwan 428002



### FOLLOW US



Website



Facebook



YouTube



Line

專利製品 仿冒必究

Patented products, counterfeiting not allowed.